

IBIZA CLUB
VAPES & E-LIQUIDS

DELUXE SUB Ohm VAPE KIT

USER MANUAL

Model No: 114159

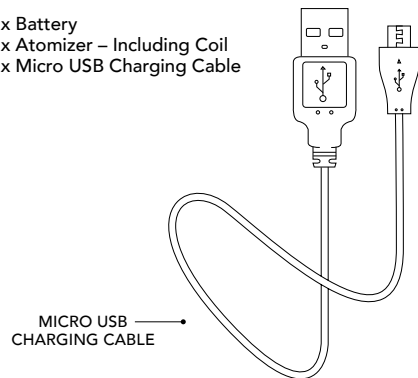
PLEASE READ THE INSTRUCTIONS CAREFULLY BEFORE USE.

DEVICE SPECIFICATION

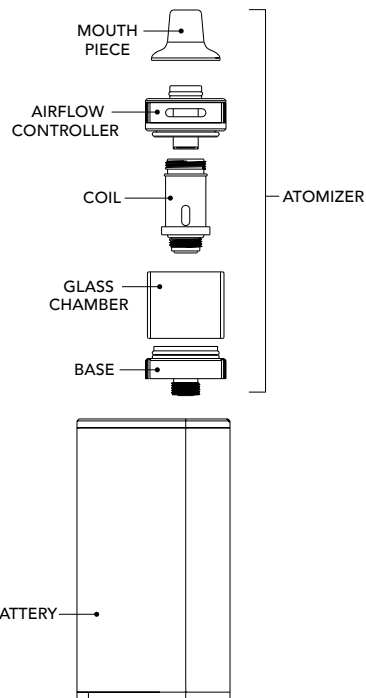
Model No: 114159
Dimensions: 113x38x22mm
Atomizer Capacity: 2ml
Coil Resistance: 0.3Ω
Coil Dimensions: 22x11(Dia)mm
Power: 20W/30W/40W/50W
Input Voltage: 3.2~4.2V
Battery Capacity: 1500mAh

CONTENTS

1x Battery
1x Atomizer – Including Coil
1x Micro USB Charging Cable

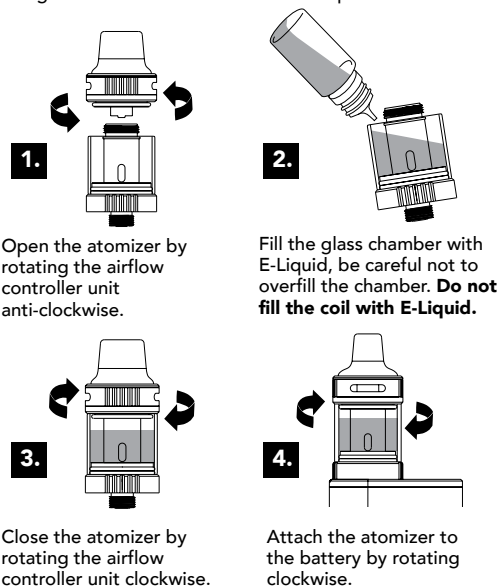


MICRO USB CHARGING CABLE



FILLING INSTRUCTION

For best results we recommend that you use our specially formulated Ibiza Club® E-liquids with your Ibiza Club® device. For Sub Ohm devices we recommend using 6mg/ml or lower nicotine content E-Liquids.



Caution - Some E-Liquids may erode the rubber seals over time. Avoid leaving E-Liquids in the chamber for prolonged periods of time.

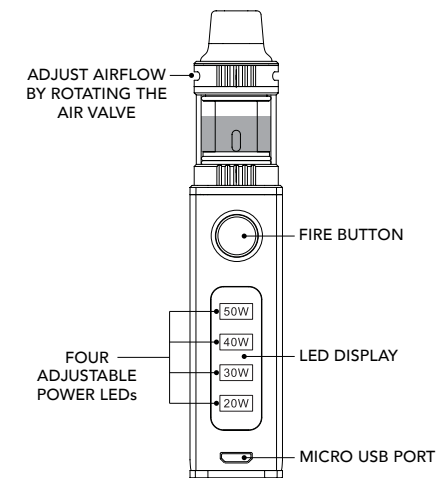
USER INSTRUCTION

Caution - Before turning ON the Ibiza Club® device ensure the atomizer has been filled with E-Liquid. If the atomizer is activated without any E-Liquid it will cause dry burning damage to the coil.

We recommend allowing the device to stand for approximately 10 minutes once filled with E-Liquid to allow the coil to prime.

Turning ON/OFF

- To turn ON the Ibiza Club® device press the fire button 5 times within 2 seconds. The four adjustable power LEDs will flash 3 times.
- The Ibiza Club® device is now ON. Pressing and holding the fire button will activate the atomizer and will display the selected power rating LED.
- To turn OFF the Ibiza Club® device press the fire button 5 times within 2 seconds. The four adjustable power LEDs will flash 3 times.
- The Ibiza Club® device is now OFF.



Using the Device

- Ensure the atomizer has been filled with E-Liquid before pressing the fire button.
- Press the fire button to activate the atomizer. When pressing the fire button the current power rating will show up on the LED display.
- Inhale slowly.
- For safety reasons the device will automatically cut off after 10 seconds of pressing the fire button.

Adjusting the Power Setting

- This device has 4 power settings – 20w, 30w, 40w and 50w.
- To change the power setting press the fire button 3 times within 2 seconds to open the power settings menu. All four adjustable power LEDs will light up, the LED for the current power setting will flash. To change the power setting press the fire button repeatedly to cycle through the options until you reach your desired power setting. Allow the LED to flash 3 times and turn off, then continue to use as normal.

We recommend starting on 20w and then increasing the power until your desired level of vapour is achieved.

Battery Indicator

To check the battery level press the fire button twice within 2 seconds. Each bar represents 25% charge. When the battery is almost empty the device will cut off and the lowest bar on the LED display will flash 5 times.

Adjusting Airflow

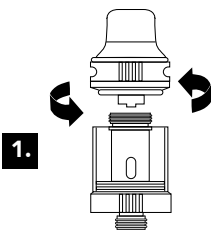
The airflow controller is located below the mouth piece. To increase the airflow rotate the ring anti-clockwise, or to decrease the air flow rotate the ring clockwise.

- Greater airflow will result in more vapour.
- Less airflow will result in less vapour and more flavour.
- We recommend increasing airflow as you increase the power of your device.

REPLACING THE ATOMIZER COIL

The coil is a consumable part and should be changed regularly depending upon rate of use. You should replace the coil if you notice a deterioration in performance, taste or quality.

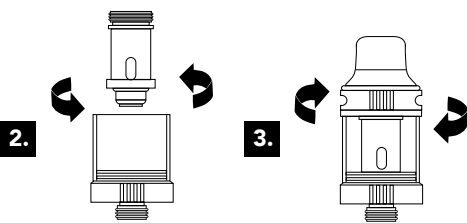
***Only use Ibiza Club® Deluxe Sub Ohm replacement coils (Model No: 114180) with this Ibiza Club® device.**



Ensure the Ibiza Club® device is turned OFF. Open the atomizer by rotating the airflow controller unit anti-clockwise.



WARNING Before replacing the coil ensure the atomizer is empty.



To remove the existing coil, rotate it anti-clockwise inside the glass chamber. Insert the new coil and rotate it clockwise to tighten fully. Then reattach the airflow controller unit.

CLEANING

- Detach the atomizer from the battery.
- Open the atomizer by rotating the airflow controller unit anti-clockwise.
- Carefully dispose of any remaining E-Liquid in the atomizer.
- Remove the atomizer coil by rotating it anti-clockwise inside the glass chamber.
- Do not wash the coil. Wipe clean with a dry tissue.
- Carefully wash the remaining atomizer components with warm water and wipe dry with a soft cloth.

- Do not transfer the glass chamber from hot to cold water as it may crack.
- Replace the atomizer coil and secure in place by rotating clockwise.
- Reattach the airflow controller and rotate clockwise.

DO NOT WASH OR SUBMERGE THE BATTERY IN WATER, WIPE CLEAN WITH A DRY CLOTH.

CHARGING

- Insert the micro USB cable into the Ibiza Club® devices micro USB port.
- Connect the cable to a mains charger or appropriate power source via its USB socket.
- During charging the LED screen will flash showing the current level of charge.
- When the LED screen stops flashing and all 4 power levels are solid, the battery is fully charged.
- Once fully charged detach the battery from the power supply.
- The device will not function during charging.
- Never leave the battery unattended whilst on charge.

Charging time: Approximately 2 hours

STORAGE

Store below 25°C in a clean dry place. Keep the device out of the reach of children and animals.

PRECAUTIONARY STATEMENTS

READ ALL INSTRUCTIONS AND CARE DETAILS PRIOR TO USING THE DEVICE, IMPROPER USE CAN RESULT IN DEVICE DAMAGE OR MALFUNCTION.

Only use Ibiza Club® replacement coils (Model No: 114180).

- Do not leave this device in direct sunlight or near heat sources.
- Avoid dropping, knocking, scratching or other impacts to the device. In the event of any damage for whatever reason, discontinue use and dispose of in a responsible manner.
- Do not attempt to repair or modify this device.
- Keep this device dry at all times other than when cleaning the atomizer. Do not submerge the battery in liquid or expose to moisture.
- Your Ibiza Club® device has been quality checked after manufacture, however if your battery displays excessive heat or any abnormal phenomenon, discontinue use and dispose of in a responsible manner.
- It is recommended that the device is stored charged if it is not intended to be used for an extended period of time.
- Never leave the battery unattended whilst on charge.
- To avoid the risk of injury, fire or damage to the device or property, only charge the device using the USB cable provided.

WARNINGS AND PRECAUTIONS

This product is not recommended for:-

- Non-smokers.
- Young persons under the age of 18 years.
- Pregnant or breast feeding women as nicotine is known to cross the placenta and be excreted in breast milk.
- Persons experiencing general ill health such as heart disease, liver or kidney problems, stomach and duodenal ulcers, long term throat disease or difficulty breathing due to asthma, bronchitis or emphysema.
- Those who have an overactive thyroid gland or have a pheochromocytoma (a tumour of the adrenal gland that can affect high blood pressure).
- Those who have diabetes, as nicotine can affect your blood sugar levels.
- Those taking the following medication:- Theophylline - to treat breathing problems. Ropinirole - to treat restless legs. Clozapone - to treat schizophrenia.
- Do not use nicotine containing E-Liquids if you are allergic to nicotine or any other ingredient contained in E-Liquids.

Keep out of reach of children.

POSSIBLE SIDE EFFECTS

Inhaling too much nicotine or overuse of the device could lead to you experiencing side effects such as:-

- Nausea, vomiting
- Headache
- Feeling faint
- Dizziness
- Coughing
- Mouth or throat irritation
- Stomach discomfort
- Nasal congestion
- Hiccups
- Chest palpitations or abnormal heart rate

Discontinue use if you experience any of the above side effects including any other side effects.

If side effects persist after discontinuing use, consult your doctor or healthcare professional and bring this leaflet to their attention.

ADDICTIVENESS

Nicotine is highly addictive and is therefore intended for adult smokers only.



To view the full range of Ibiza Club® products visit our website –

ibizavapeclub.com

FIND US and JOIN THE CLUB!

#ibizavapeclub
@ibizavapeclub



PRODUCED BY: AFB PLC, UNIT 2, ALBAN PARK, HATFIELD ROAD, ST ALBANS, HERTS, AL4 0JJ, UK

MADE IN CHINA

THE NAME IBIZA CLUB® IS A REGISTERED TRADEMARK OF AFB PLC.