

IBIZA CLUB

VAPES & E-LIQUIDS

REPLACEMENT PODS

USER MANUAL

Model No: 120860

PLEASE READ THE INSTRUCTIONS CAREFULLY BEFORE USE.

PRODUCT SPECIFICATION

Model No: 120860
Coil Resistance (built into pod): 1.6Ω
Pod Dimensions: 33x19x10mm
Pod Capacity: 2ml

For use with Ibiza Club® Refillable Pod Vape Kit Model No: 120839

CONTENTS

3 x Replacement Refillable Pods
3 x Additional Spare Bungs

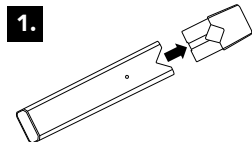
REPLACING AND FILLING THE POD

The pod is a consumable part as the coil is built in. The pod should be changed regularly depending upon rate of use. You should replace the pod if you notice a deterioration in performance, taste or quality.

We recommend replacing your Pod after refilling it 5 times based on average vaping usage.

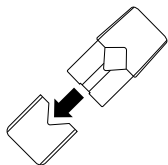
***Only use Ibiza Club® replacement pods (Model No: 120860) with the Ibiza Club® refillable pod vape device (Model No: 120839)**

For best results we recommend that you use our specially formulated Ibiza Club® E-liquids with your Ibiza Club® device.

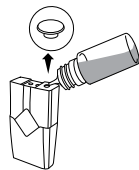


To disconnect the pod hold the battery and gently pull the pod away.

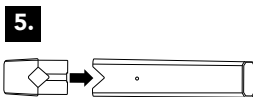
2. If using a new pod remove the protective cap from the base of the pod. To do this hold both sides and pull apart.



3. Remove the black rubber bung from the underside of the pod. Place the bung somewhere safe to ensure it is not lost.



4. Insert the nozzle of the E-liquid bottle into the filling hole on the underside of the pod. Squeeze the bottle intermittently to fill the pod, allow the E-liquid to settle between squeezes.



Once full, reattach the bung and gently push the pod back into the battery section.

Do not worry if you lose a black rubber bung during filling, 3 additional bungs have been included.

*Enjoy multiple flavours and strengths on the go by interchanging pods.

DISPOSE OF THE USED POD IN A RESPONSIBLE MANNER.

WARNINGS AND PRECAUTIONS

This product is not recommended for:-

- Non-smokers.
- Young persons under the age of 18 years.
- Pregnant or breast feeding women as nicotine is known to cross the placenta and be excreted in breast milk.
- Persons experiencing general ill health such as heart disease, liver or kidney problems, stomach and duodenal ulcers, long term throat disease or difficulty breathing due to asthma, bronchitis or emphysema.
- Those who have an overactive thyroid gland or have a pheochromocytoma (a tumour of the adrenal gland that can affect high blood pressure).
- Those who have diabetes, as nicotine can affect your blood sugar levels.

- Those taking the following medication:-
Theophylline - to treat breathing problems.
Ropinirole - to treat restless legs.
Clozapone - to treat schizophrenia.
- Do not use nicotine containing E-Liquids if you are allergic to nicotine or any other ingredient contained in E-Liquids.

Keep out of reach of children.

POSSIBLE SIDE EFFECTS

Inhaling too much nicotine or overuse of the device could lead to you experiencing side effects such as:-

- Nausea, vomiting
- Headache
- Feeling faint
- Dizziness
- Coughing
- Mouth or throat irritation
- Stomach discomfort
- Nasal congestion
- Hiccups
- Chest palpitations or abnormal heart rate

Discontinue use if you experience any of the above side effects including any other side effects. If side effects persist after discontinuing use, consult your doctor or healthcare professional and bring this leaflet to their attention.

ADDICTIVENESS

Nicotine is highly addictive and is therefore intended for adult smokers only.



To view the full range of Ibiza Club® products visit our website –

ibizavapeclub.com

FIND US and JOIN THE CLUB!

#ibizavapeclub
@ibizavapeclub



IBIZA CLUB

VAPES & E-LIQUIDS

PRODUCED BY: AFB PLC, UNIT 2,
ALBAN PARK, HATFIELD ROAD,
ST ALBANS, HERTS, AL4 0JJ, UK

MADE IN CHINA

THE NAME IBIZA CLUB® IS A REGISTERED
TRADEMARK OF AFB PLC.