

**IBIZA CLUB**  
VAPES & E-LIQUIDS

## REFILLABLE POD VAPE KIT

### USER MANUAL

Model No: 120839

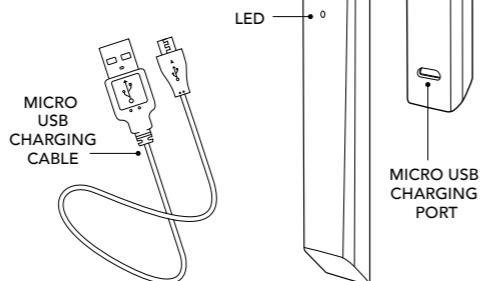
PLEASE READ THE INSTRUCTIONS  
CAREFULLY BEFORE USE.

#### DEVICE SPECIFICATION

Model No: 120839  
Product Dimensions: 107x19x10mm  
Pod Capacity: 2ml  
Coil Resistance  
(built into pod): 1.6Ω  
Pod Dimensions: 33x19x10mm  
Power: 10W Max  
Input Voltage: 3.7V  
Battery Capacity: 350mAh

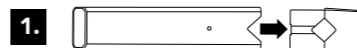
#### CONTENTS

1 x Battery  
1 x Refillable Pod  
1 x Micro USB Charging Cable  
3 x Additional Spare Bungs

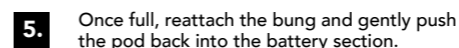
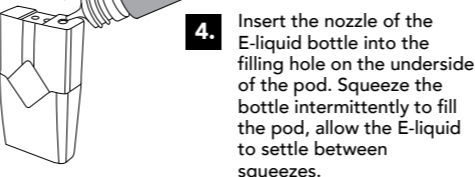
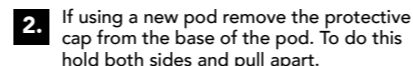


#### FILLING INSTRUCTION

For best results we recommend that you use our specially formulated Ibiza Club® E-liquids with your Ibiza Club® device.



To disconnect the pod hold the battery and gently pull the pod away.



Do not worry if you lose a black rubber bung during filling, 3 additional bungs have been included with this device.

#### USER INSTRUCTION

**Caution** - Before using the Ibiza Club® device ensure the pod has been filled with E-Liquid. If the pod is activated without any E-Liquid it will cause dry burning damage to the coil in the pod.

We recommend allowing the device to stand for approximately 10 minutes once filled with E-Liquid to allow the pod to prime.

#### Using the Device

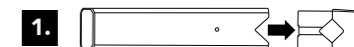
- Ensure the pod has been filled with E-Liquid before use.
- The Ibiza Club® device does not have an on/off button. To activate just put the device to your lips and inhale slowly.
- Once you begin to inhale, the white LED will turn on. The pod will activate and begin to produce vapour.
- When you stop inhaling, the device will automatically turn off.
- The white LED will flash 10 times to indicate that the battery requires charging.
- For safety reasons the white LED will flash twice and the device will automatically cut off if inhalation exceeds 10 seconds.

#### REPLACING THE POD

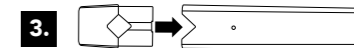
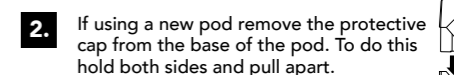
The pod is a consumable part as the coil is built in. The pod should be changed regularly depending upon rate of use. You should replace the pod if you notice a deterioration in performance, taste or quality.

We recommend replacing your Pod after refilling it 5 times based on average vaping usage.

**\*Only use Ibiza Club® replacement pods (Model No: 120860) with this Ibiza Club® device.**



To disconnect the pod hold the battery and gently pull the pod away.



Fill the pod, details of how to do this can be found within the filling instructions in the manual. Gently push the new pod into the battery section.

\* Additional pods can be purchased so that you can conveniently enjoy multiple flavours and strengths on the go by interchanging pods.

**DISPOSE OF THE USED POD IN A RESPONSIBLE MANNER.**

#### CLEANING

- Do not attempt to wash the pod as the built in coil could be damaged.
- Do not wash or submerge the battery in water, wipe clean with a dry cloth.

#### CHARGING

- Insert the micro USB cable into the Ibiza Club® device's micro USB port.
- Connect the cable to a mains charger or appropriate power source via its USB socket.
- During charging the LED will remain white.
- The white LED will flash 3 times and automatically turn off when fully charged.
- Once fully charged detach the device from the power supply.
- Do not use the device whilst charging.
- Never leave the device unattended whilst on charge.

Charging time: Approximately 1 hour

#### STORAGE

Store below 25°C in a clean dry place. Keep the device out of the reach of children and animals.

#### PRECAUTIONARY STATEMENTS

READ ALL INSTRUCTIONS AND CARE DETAILS PRIOR TO USING THE DEVICE, IMPROPER USE CAN RESULT IN DEVICE DAMAGE OR MALFUNCTION.

**\*Only use Ibiza Club® replacement pods (Model No: 120860) with the Ibiza Club® refillable pod vape device (Model No: 120839)**

- Do not leave this device in direct sunlight or near heat sources.
- Avoid dropping, knocking, scratching or other impacts to the device. In the event of any damage for whatever reason, discontinue use and dispose of the device in a responsible manner.
- Do not attempt to repair or modify this device.
- Keep this device dry at all times. Do not submerge the device in liquid or expose to moisture.
- Your Ibiza Club® device has been quality checked after manufacture, however if your device displays excessive heat or any abnormal phenomenon, discontinue use and dispose of the device in a responsible manner.
- It is recommended that the device is stored charged if it is not intended to be used for an extended period of time.
- Never leave the device unattended whilst on charge.
- To avoid the risk of injury, fire or damage to the device or property, only charge the device using the USB cable provided.

#### WARNINGS AND PRECAUTIONS

This product is not recommended for:-

- Non-smokers.
- Young persons under the age of 18 years.
- Pregnant or breast feeding women as nicotine is known to cross the placenta and be excreted in breast milk.
- Persons experiencing general ill health such as heart disease, liver or kidney problems, stomach and duodenal ulcers, long term throat disease or difficulty breathing due to asthma, bronchitis or emphysema.
- Those who have an overactive thyroid gland or have a pheochromocytoma (a tumour of the adrenal gland that can affect high blood pressure).
- Those who have diabetes, as nicotine can affect your blood sugar levels.
- Those taking the following medication:-  
Theophylline - to treat breathing problems.  
Ropinirole - to treat restless legs.  
Clozapone - to treat schizophrenia.
- Do not use nicotine containing E-Liquids if you are allergic to nicotine or any other ingredient contained in E-Liquids.

**Keep out of reach of children.**

#### POSSIBLE SIDE EFFECTS

Inhaling too much nicotine or overuse of the device could lead to you experiencing side effects such as:-

- Nausea, vomiting
- Headache
- Feeling faint
- Dizziness
- Coughing
- Mouth or throat irritation
- Stomach discomfort
- Nasal congestion
- Hiccups
- Chest palpitations or abnormal heart rate

Discontinue use if you experience any of the above side effects including any other side effects. If side effects persist after discontinuing use, consult your doctor or healthcare professional and bring this leaflet to their attention.

#### ADDICTIVENESS

Nicotine is highly addictive and is therefore intended for adult smokers only.



To view the full range of  
Ibiza Club®  
products visit our website –

[ibizavapeclub.com](http://ibizavapeclub.com)

FIND US and JOIN THE CLUB!

#ibizavapeclub  
@ibizavapeclub



**IBIZA CLUB**  
VAPES & E-LIQUIDS

PRODUCED BY: AFB PLC, UNIT 2, ALBAN PARK,  
HATFIELD ROAD,  
ST ALBANS, HERTS, AL4 0JJ, UK

MADE IN CHINA

THE NAME IBIZA CLUB® IS A REGISTERED  
TRADEMARK OF AFB PLC.